

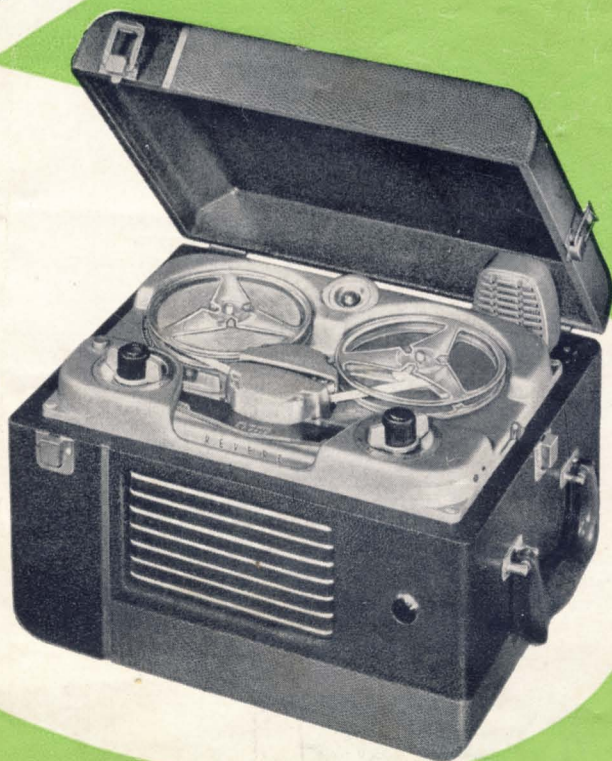
OPERATING INSTRUCTIONS

Revere

TAPE RECORDERS



Model TR-200
Model TR-600



Model T-100
Model T-500

INTRODUCTION

What is magnetic tape recording?

Magnetic tape recording is now accepted by the broadcasting and recording industries as the finest known method of recording and reproduction. Many of the programs you hear on the radio today are transcribed on magnetic tape. This modern marvel of entertainment brings noise-free, distortion-free, high fidelity reproduction to the recording industry for the first time. And now, you can enjoy this same fine reproduction in your own home.

While you record, you are creating literally millions of magnets every minute on your tape. Each of these magnets has its own individual character, which it will retain indefinitely until purposely erased in re-recording on the same tape. Each tiny magnet stores the sound energy you wish to keep. At an instant's notice, it is ready to give you the finest in sound reproduction.

Revere Magnetic Tape Recorder serves you in many ways

How wonderful to have priceless recordings of the big moment in your life! Childhood birthday parties . . . your wedding ceremony . . . the voices of your children . . . family reunions. From now on, moments like these are yours for the taking.



Do you love good music? Then make recordings, unsurpassed by any you can buy, right from your own A.M. or F.M. radio. You'll also want permanent records on tape of special programs and important speeches. If you own the Revere model TR-200 or TR-600 Tape Recorder with Radio, you can record any radio program instantly by merely turning a switch—no hookup needed.

Revere Tape Recorder is perfect for many business uses, too. No finer instrument exists for recording meetings, sales talks, inventories, dictation, interviews. Revere Tape Recorder saves valuable time, catches every important utterance.



Many schools depend on tape recordings for use in speech, music and other classes. Playbacks allow students to appraise their mistakes and remedy them quickly. Salesmen practice speaking on the Revere Recorder and learn to improve their sales presentation.



Yes, a Revere Tape Recorder is worth its weight in usefulness and pleasure to every family, school, church, business, club, salesman, or musician. You'll find scores of uses for it!



OPERATES ONLY ON A.C. CURRENT

TIME-FOOTAGE INDICATOR. Convenient scale helps locate desired portion of a recording.

RECORD SAFETY BUTTON. Prevents accidental erasures by controlling movement of Function Switch to Record position.

INPUT AND OUTPUT JACKS (REAR). For recording from radio, phonograph, microphone. Output for extension speakers.

MICROPHONE. Special Revere microphone with cord attached.

FRONT HEAD COVER.

RECORDING LEVEL INDICATOR. Dual element neon lamp flashes to show the best recording level.

FUNCTION SWITCH. Controls circuits for recording, playing, rewind and stop.

RAPID FORWARD LEVER. Permits skipping forward to any part of the reel quickly.

LOUDSPEAKER. 5 by 7-inch elliptical speaker.

HEAD COVER SLOT. Tape is easily threaded straight through this slot.

INSTANT CONTROL LEVER. Starts and stops tape instantly. Operates manually or by accessory foot control unit.

VOLUME CONTROL KNOB. Turns machine on, adjusts volume and tone.

HOW TO OPERATE

TO THREAD AND MAKE RECORDINGS

Turn on power with Volume Control Knob. Place empty reel on right hand spindle. Place full reel of tape on left hand spindle. Thread tape straight through the slot in the head covers, and onto the right hand or take-up reel. Magnetic emulsion, on the dull side of plastic tape must always face Recording head. Reels move in counterclockwise direction during recording and replay.

NOW YOU CAN RECORD FROM EITHER MICROPHONE, PHONOGRAPH OR RADIO

Recording from Microphone—Connect Microphone to input at rear of case marked Microphone. (Figure 2.) Depress Safety Button. This button to the left of the Function Switch prevents accidental erasing of a recording. Function Switch cannot be turned to "Record" position until safety button is depressed. Turn Function Switch to "Record-Microphone" position. Adjust Volume Control until one half of the Recording Level Indicator flashes during recording. This dual element neon lamp indicates when proper recording level has been reached, and also when tape is being overloaded. Nominal recording level is reached when one half of the lamp flashes intermittently or continuously. Overload condition is indicated when both halves of lamp flash. If both sides flash, the recording will be distorted. If neither side flashes, it may be difficult to obtain desired volume in playback, and noise level will be higher. To make good recordings, always operate at one half flash condition. **AT CONCLUSION OF DESIRED RECORDING, RETURN FUNCTION SWITCH TO "STOP" POSITION.**

Do not hold Microphone closer than six inches from the lips, or you will get unnatural breath noise. Do not set Microphone on piano or radio cabinet when recording, or it will pick up vibrations. When recording a group meeting or party, place Microphone in center of group on table or floor and wrap in a towel or coat. This method reduces extraneous acoustical disturbances. Try to keep Microphone at least three feet from the wall during recording. Do not place Microphone on table near the Tape Recorder, as it may pick up vibrations and produce a noisy recording.

Twin Track Recording—Your Revere Tape Recorder is a twin track machine. That means that each reel of tape holds *two* full length recordings on the upper and lower halves of the dull side of tape. Instead of the half-hour recordings of most recorders, you get a full hour play on the T-100 and TR-200 and two hours on the T-500 and TR-600.

Rewinding and putting on a new reel of tape is not necessary until both tracks have been used. Only a few seconds are required to reverse the reels. To record or play the opposite edge, sim-

ply take the full reel from the right hand spindle, turn it over, and place it on the left hand spindle. The machine is now ready to thread and use.

To rewind full reel—Place full reel on right spindle. Place empty reel on left hand spindle. Thread tape through slot and onto left hand or rewind reel. During rewind, reels move in clockwise direction. Tape is now ready for rewind simply by turning function switch to "Rewind" position. **DO NOT HOLD OR SLOW DOWN REELS WHILE REWINDING.**

Recording from Phonograph—Any standard crystal or magnetic phonograph may be connected to the Revere Tape Recorder by use of a standard phono plug, or with the radio attachment cord supplied with the recorder.

Plug into the input at rear of case marked Phono-Radio. (Figure 2.) Depress Safety Button and turn Function Switch to the "Record Radio-Phono" position. Adjust volume level as explained previously. **AT CONCLUSION OF DESIRED RECORDING, RETURN FUNCTION SWITCH TO "STOP" POSITION.**

Recording from Radio—Connect radio attachment cord clips to terminals on loudspeaker of radio. Plug into the input at rear of case marked Phono-Radio. (Figure 2.) Depress Safety Button and turn Function Switch to the "Record Radio-Phono" position. Adjust volume as explained previously. **AT CONCLUSION OF DESIRED RECORDING, RETURN FUNCTION SWITCH TO "STOP" POSITION.**

You'll discover many recording tricks as you become familiar with your Revere Recorder. Here are two examples: By switching between "Record-Radio" and "Record-Microphone," it is simple to insert your own commentary on radio programs.

By playing back and quickly switching between "Play" and "Record-Microphone," you may erase or insert individual words, syllables, phrases, or any material desired in perfect timing with the original recording. These tricks are fun—try them!

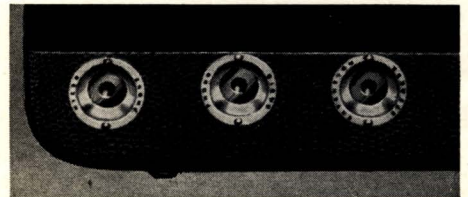


FIG. 2

THE INSTANT CONTROL LEVER

Starts and stops the tape instantly. Operates manually or by accessory foot control unit. Used for cutting out portions not desired by recording. No coasting of the tape—no sound lost or slurred at any time.

PILOT LIGHT

The pilot light, in the front right side of case, glows whenever the unit is in use.

CAUTION: DO NOT HOLD OR SLOW DOWN REELS WHILE REWINDING. WHEN RECORDER IS NOT IN USE, MAKE SURE FUNCTION SWITCH IS TURNED TO "STOP" POSITION.

OPERATES ONLY ON A.C. CURRENT

TO PLAY RECORDINGS

Turn on power with Volume Control Knob. Thread recorder. Turn Function Switch to "Play" position, and adjust volume and tone to desired level.

Rewind and Rapid Forward—Sometimes during playbacks, you may wish to hear a certain portion over again. At any part of the reel, the tape may be rewound fully or partially by simply turning the Function Switch to the "Rewind" position. Rewinding a full reel takes approximately one minute!

During playback of recordings it is possible to skip forward to any part of the reel by using the Rapid Forward Lever. In "Record" position this is not possible, because skipping would destroy the recording. A few seconds of Rapid Forward are equivalent to skipping several minutes of normal recording.

Extension Speaker Jack (Figure 2)—This output connection is provided for use with an external speaker or other amplifier. The Revere Tape Recorder can be connected across the terminals of a radio loudspeaker to play recording through the loudspeaker. The radio attachment cord can be used for this purpose. Any loudspeaker can be used with a voice coil impedance between 3 and 8 ohms.

AUTOMATIC ERASURE

The Revere Tape Recorder erases automatically whenever placed in "Record" position. It will erase while you record your new material; or, by turning volume control down, it will erase without putting new sound on the tape. Individual words, phrases, or sounds may be erased or re-recorded at any time desired.

SPLICING

All you need is a scissors and ordinary Scotch Tape. When cutting tape to splice, cut a slight diagonal for best results. Simply attach the two ends together with the Scotch Tape, and trim off all excess width with the scissors. Always splice plastic tape on the glossy side.

CLEANING RECORDING HEAD

The front face of the recording head should be cleaned occasionally to prevent accumulation of dust particles, or oxide from tape. Foreign matter can make your recordings sound distorted or low in volume. **WHEN SOUND IS UNSATISFACTORY, SEE IF THE RECORDING HEAD IS CLEAN BEFORE UNDERTAKING REPAIRS ON UNIT. TO CLEAN HEAD:**

Remove front head cover from casting, by lifting (See Fig. 1)

Clean face of head with a soft cloth moistened with alcohol and replace cover.

PRESSURE AND ERASE PAD REPLACEMENT

After several hundred hours of operation, it may be necessary to replace the felt pressure and erase pads that are mounted behind the front head cover in the center of the top plate. If these are not replaced when worn out, distorted recordings and non erasure may result. Your dealer can make this replacement in a few seconds.

PROTECTIVE MAINTENANCE

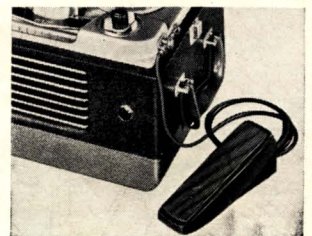
Do not oil this unit at any point! This is important. Oil causes slippage in the drive.

SERVICING FOR FAULTY SOUND AND TUBE REPLACEMENT

Check for loose or defective tubes. To reach tubes, remove two screws and take out rear perforated compartment. Remove four screws and lift unit out of case. Make certain all tubes are firmly in their sockets. For replacement, tube layout marking is on the back panel of the chassis. Read it carefully. Do not attempt to adjust the mechanism. This is a precise piece of equipment. Call on your Revere Dealer for any service necessary other than tube replacement.

FOOT CONTROL

A convenient foot control accessory is available for use with Revere Recorder. During recording or play back, you can start and stop the tape instantly with slight foot pressure. It is especially valuable for making recordings where many pauses are the rule. It attaches easily to side of unit near the volume control knob.



CAUTION: DO NOT HOLD OR SLOW DOWN REELS WHILE REWINDING. WHEN RECORDER IS NOT IN USE, MAKE SURE FUNCTION SWITCH IS TURNED TO "STOP" POSITION.



UNDERWRITERS
APPROVED

HERE, in one fine portable package, you have a complete recording instrument. This versatile unit combines the all-around excellence of the Revere Magnetic Tape Recorder with the stand-out performance of a new brilliant-toned radio. Recorder and radio may be played separately, or both used together without need for connecting terminal points. Thus, you have the unique advantage of being always ready to capture your favorite radio programs on tape.

TO OPERATE THE RADIO ONLY

Leave left hand function switch in "stop" position. Turn radio on with right hand volume control knob. Put switch on radio dial to "motor off" position to turn off recorder motor while radio is playing.

SHUTTING OFF MOTOR WHEN USING RADIO ONLY FOR LONG PERIODS, WILL ADD TO MOTOR LIFE.

To Play Radio Through Extension Speaker, use extension speaker jack as explained on page 5.

CAUTION: DO NOT HOLD OR SLOW DOWN REELS WHILE REWINDING. WHEN RECORDER IS NOT IN USE, MAKE SURE FUNCTION SWITCH IS TURNED TO "STOP" POSITION



A FINE RADIO

For your listening pleasure! Powerful circuit with amazing volume and tone control from treble to bass. Built-in antenna. Portable — plugs in anywhere.

Revere Magnetic Tape RECORDER and RADIO COMBINATION

A SUPERB RECORDER

This recorder can be operated alone, or simultaneously with radio. At the turn of a switch, you can record while you listen to operas, symphonies, dance music, speeches and plays.



TO OPERATE THE RECORDER

Operation of the Revere Recorder Radio is the same as with the model T-100 recorder, described on page 4. When machine is turned on the radio plays automatically. When function switch is in "play" or "record microphone" position, the radio will not play.

TO RECORD FROM BUILT-IN RADIO

Merely depress record safety button. Turn left hand function switch to "record radio-phono" and adjust volume level as explained on page 4. RETURN FUNCTION SWITCH TO "STOP" POSITION AT CONCLUSION OF RECORDING.

To Record from Separate Radio, TV Set, or Phonograph, follow instructions on page 4. Insertion of plug into the Radio-Phono input at rear of recorder switches the built-in radio off and connects your external source.

To Record with Microphone follow instructions on page 4. Radio is not "on" when Function Switch is in Record-Microphone position.

To Play Recorder Through Extension Speaker follow instructions on page 5. Radio is not "on" when Function Switch is in Play position.

IMPORTANT: Recorder will not operate unless the Motor Switch on radio dial panel is in "Motor On" position.

REVERE TAPE RECORDER ACCESSORIES



FOOT CONTROL

Enables you to start and stop tape instantly without manual operation. See Page 5.
TF-400 \$17.50



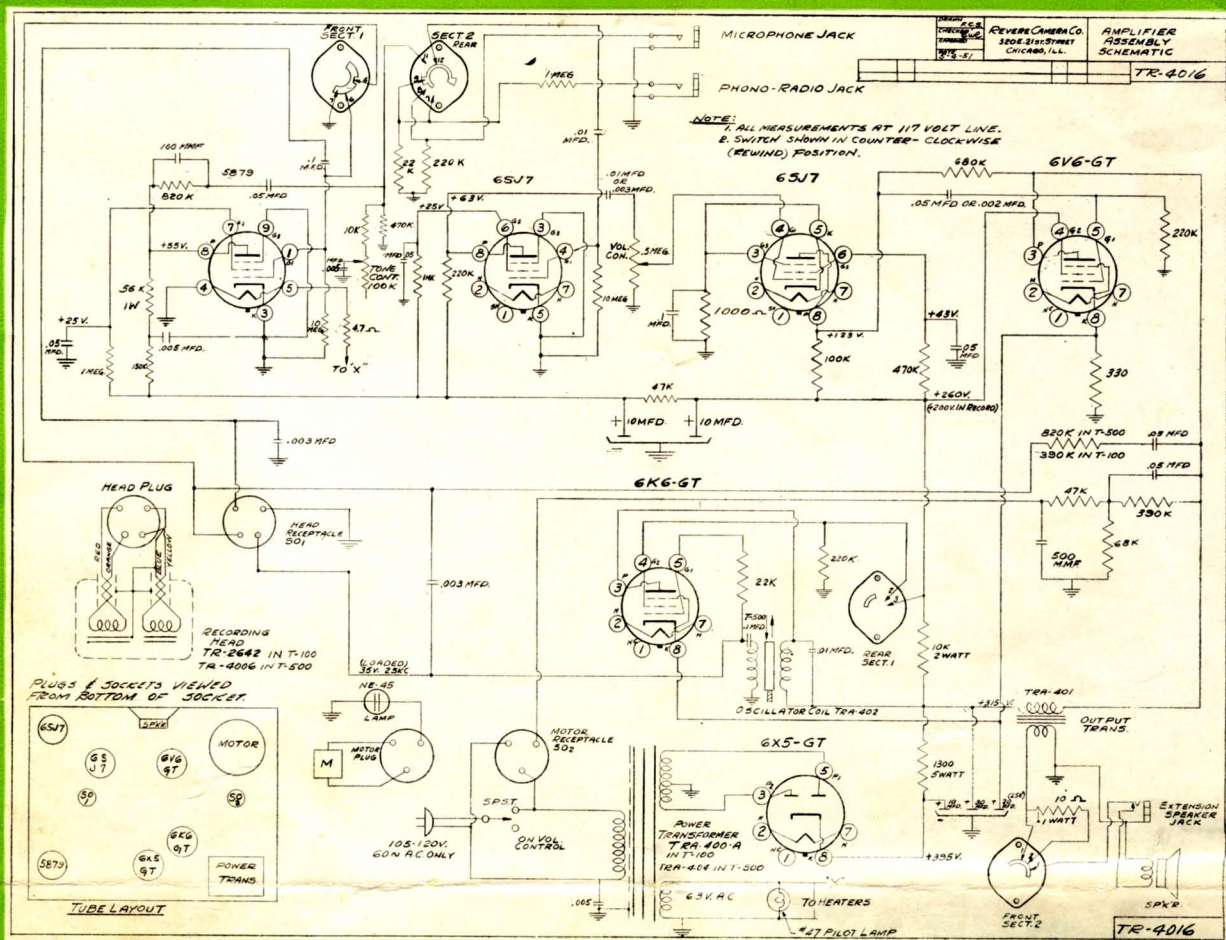
EAR PHONE

For private play-backs. Ideal for stenographers, etc. Reversible to fit either ear.
TE-401 \$10.50



MICROPHONE EXTENSION CORD ASSEMBLY

15 foot length with special Revere plug and cable type jack.
TM-403 \$7.50



REVERE RECORDER T-100-T-500 AC ONLY

SPECIFICATIONS

Size: 9" x 14" x 12" (approx.)

Weight: 25 lbs.

Power consumed: 105-120 volts A.C. — less than 100 watts.

Playing time: T100—1 hour, T500—2 hours.

Power output: 5½ watts undistorted.

Erase: Supersonic A.C. (automatic).

Microphone: Special Revere Microphone.

Loudspeaker: 5" x 7" elliptical.

PARTS LIST

REVERE CAMERA COMPANY
CHICAGO 16, ILLINOIS